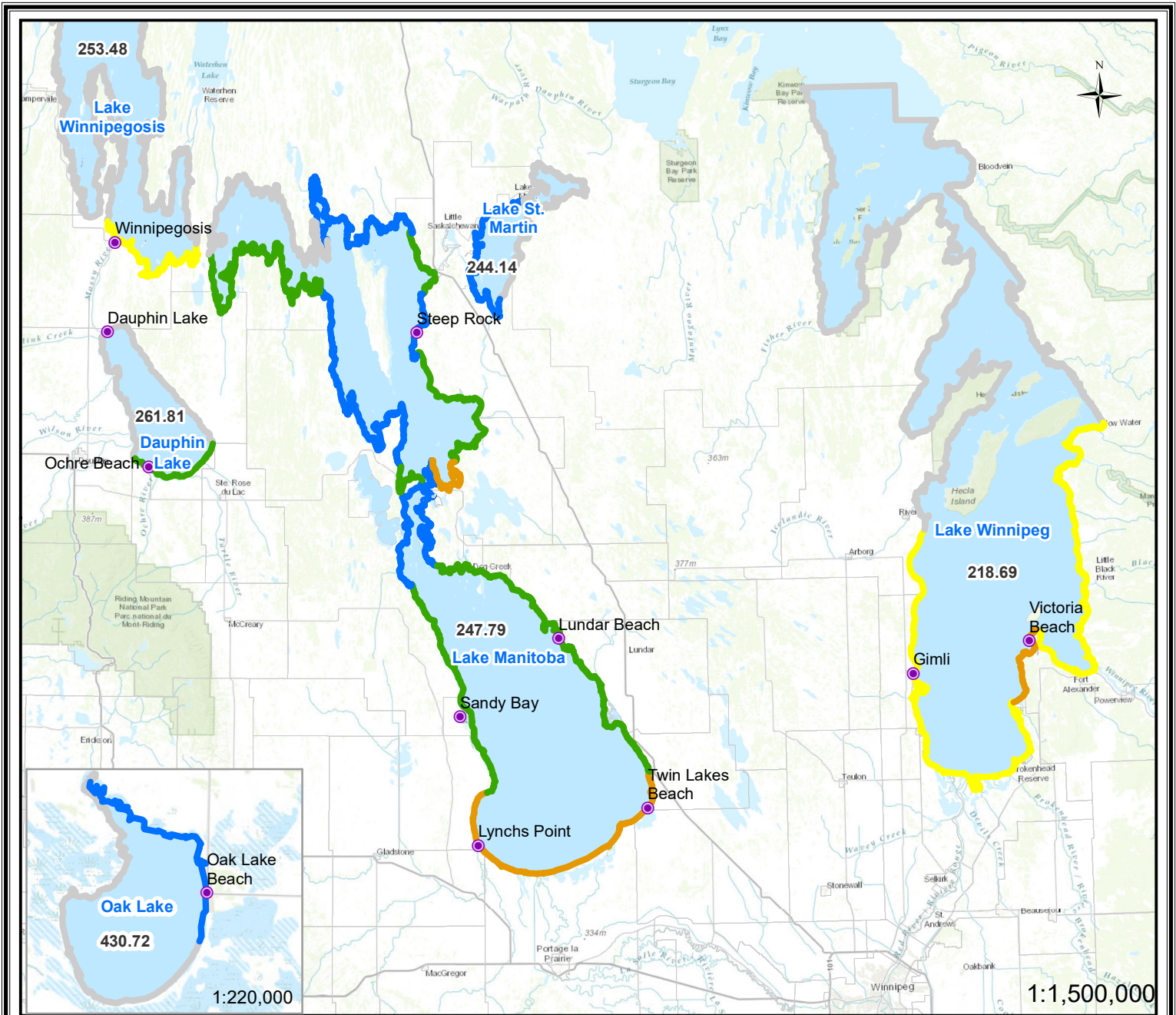


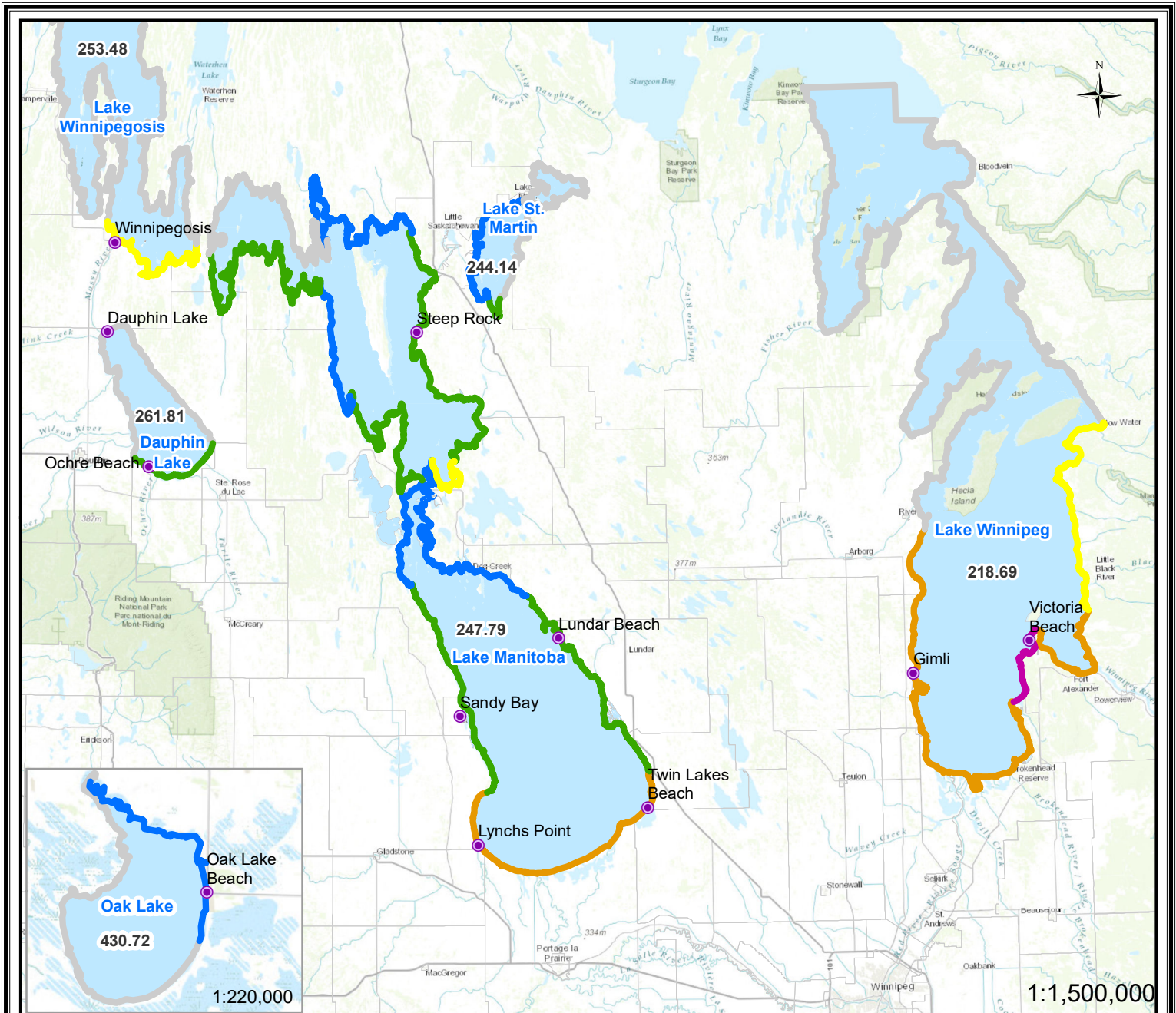
Manitoba Lake Wind Effect Forecast for July 27 AM, 2022



| Location | Ave.Dir.from North (degree) | Ave. Speed (km/h) | Location | Ave.Dir.from North (degree) | Ave. Speed (km/h) | Wind Effect Alert Categories | |
|------------------------------------|-----------------------------|-------------------|--------------------------------|-----------------------------|-------------------|------------------------------|--|
| Dauphin Lake | NW (334) | 28 | Manipogo area | NW (335) | 29 | Severe | Crest level increase will be greater than 1.5 meters; Wave action will be very significant and forceful. |
| MB Lake west side - Sandy Bay | NW (329) | 33 | Crane River area | NW (333) | 27 | | |
| MB Lake south side - Twin Beaches | NW (329) | 38 | Wpg Lake - Victoria Beach | NW (319) | 32 | High | Crest level increase will be in a range 0.9 ~ 1.5 meters; Wave action will be significant. |
| MB Lake middle - Vogar/The Narrows | NW (330) | 34 | Wpg Lake - Gimli Beach | NW (321) | 26 | | |
| MB Lake east side - Lunder Beach | NW (330) | 31 | Wpg Lake - Alberta Beach | NW (318) | 25 | Moderate-High | Crest level increase will be in a range 0.6 ~ 0.9 meters; Wave action will be considerable. |
| Northend 1 | NW (334) | 22 | Wpg Lake - O'Hanly | NW (319) | 24 | | |
| Northend 2 | NW (333) | 22 | Wpg Lake south side | NW (321) | 30 | Moderate | Crest level increase will be in a range 0.3 ~ 0.6 meters; Wave action will be moderate. |
| Guynesmer | NW (333) | 32 | Lake Winnipegosis south side | N (338) | 28 | | |
| The Bluff | NW (332) | 33 | Oak Lake east side community | NW (322) | 20 | Low | Crest level increase will be less than 0.3 meters; Wave action will be low. |
| Wapah area | NW (333) | 36 | Oak Lake north side community | NW (322) | 20 | | |
| Dolly Creek area | NW (333) | 36 | Lake St. Martin north side | NW (335) | 23 | No Alert | Wind set-up and wave action are predicted to be light. |
| Mathesons Point | NW (335) | 30 | Lake St. Martin west side | NW (334) | 21 | | |
| Steep rock | NW (335) | 28 | Lake St. Martin southwest side | NW (335) | 26 | No Data | Wind effect data not available. |
| Fairford area | NW (334) | 22 | Lake St. Martin south Side | NW (335) | 26 | | |

Note: All water levels labeled within the lakes are current wind eliminated lake levels provided in meters

Manitoba Lake Wind Effect Forecast for July 27 PM, 2022



| Location | Ave.Dir.from North (degree) | Ave. Speed (km/h) | Location | Ave.Dir.from North (degree) | Ave. Speed (km/h) | Wind Effect Alert Categories | |
|------------------------------------|-----------------------------|-------------------|--------------------------------|-----------------------------|-------------------|------------------------------|--|
| Dauphin Lake | N (341) | 25 | Manipogo area | NW (332) | 28 | Severe | Crest level increase will be greater than 1.5 meters; Wave action will be very significant and forceful. |
| MB Lake west side - Sandy Bay | NW (336) | 34 | Crane River area | NW (334) | 26 | | |
| MB Lake south side - Twin Beaches | NW (336) | 39 | Wpg Lake - Victoria Beach | NW (332) | 37 | High | Crest level increase will be in a range 0.9 ~ 1.5 meters; Wave action will be significant. |
| MB Lake middle - Vogar/The Narrows | N (340) | 33 | Wpg Lake - Gimli Beach | NW (335) | 32 | | |
| MB Lake east side - Lunder Beach | NW (336) | 32 | Wpg Lake - Alberta Beach | NW (330) | 30 | Moderate-High | Crest level increase will be in a range 0.6 ~ 0.9 meters; Wave action will be considerable. |
| Northeast 1 | N (343) | 20 | Wpg Lake - O'Hanly | NW (331) | 28 | | |
| Northeast 2 | NW (336) | 22 | Wpg Lake south side | NW (334) | 36 | Moderate | Crest level increase will be in a range 0.3 ~ 0.6 meters; Wave action will be moderate. |
| Guynemer | NW (336) | 29 | Lake Winnipegosis south side | N (338) | 26 | | |
| The Bluff | N (338) | 30 | Oak Lake east side community | NW (329) | 21 | Low | Crest level increase will be less than 0.3 meters; Wave action will be low. |
| Wapah area | N (343) | 32 | Oak Lake north side community | NW (329) | 21 | | |
| Dolly Creek area | N (343) | 32 | Lake St. Martin north side | N (343) | 21 | No Alert | Wind set-up and wave action are predicted to be light. |
| Mathesons Point | N (344) | 27 | Lake St. Martin west side | N (343) | 19 | | |
| Steep rock | N (344) | 25 | Lake St. Martin southwest side | N (343) | 23 | No Data | Wind effect data not available. |
| Fairford area | N (343) | 20 | Lake St. Martin south Side | N (343) | 23 | | |

Note: All water levels labeled within the lakes are current wind eliminated lake levels provided in meters